

HANFORD FIRE DEPARTMENT

350 W. Grangeville Blvd. Hanford, CA 93230

2012 ANNUAL REPORT

"SERVING THE COMMUNITY SINCE 1891"



On July 9, 2012, just after midnight, a passer-by notified the fire department of a fire at 215 N. Irwin St. It was the "Vendome" building. The fire was well involved in one of several businesses on the first floor and was extending to adjacent businesses as well as the second floor. Despite valiant efforts by the fire department, the building was deemed a total loss and had to be demolished soon after. The original building was erected in 1891, was added onto and operated as a hotel through the second world war and had been mainly used for businesses since the 50's. There was over \$2 million in losses and several local businesses were affected.

Mission Statement

To protect residents and visitors of Hanford from conditions that would pose a threat to life, property or the environment by utilizing aggressive prevention techniques and, when needed, respond to all emergencies in a safe, swift and efficient manner

Values

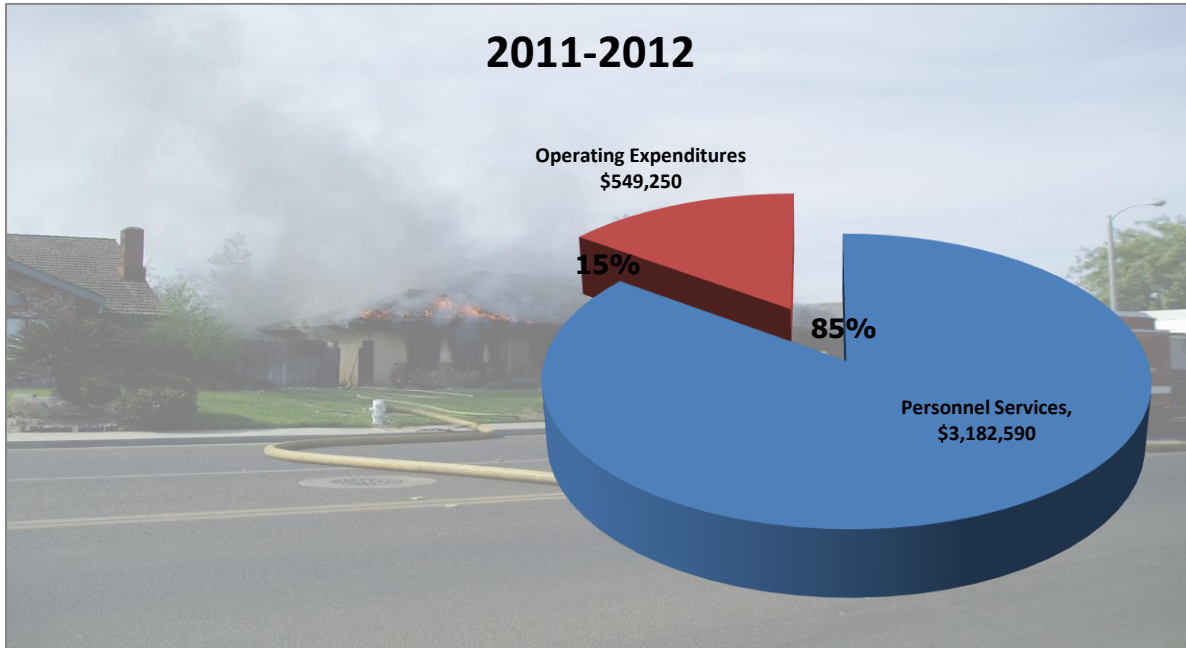
- Respect** *for each other and for all with whom we serve*
- Caring** *for our work, the people we serve and for each other*
- Integrity** *being forthright and fair in all of our efforts*
- Accountability** *Taking personal and organizational responsibility for all we do*
- Teamwork** *working together, making the whole greater than the parts*
- Family** *remembering that life goes on outside of our department walls*
- Quality** *providing the right solution for each and every situation*

Fire Chiefs Message

It is my pleasure to present to you the 2012 Annual Report for the Hanford Fire Department. 2012 saw a significant increase in the demand for emergency response. The Department responded to a total of 4749 incidents in 2012. This is 313 more than in 2011(an increase of just over 7%). In addition, Hanford Fire Department responded to 29 requests for mutual aid by the Kings County Fire Department. In return, the Kings County Fire Department responded to 23 requests for mutual aid. The Hanford Fire Department serves the City of Hanford as it has since 1891, with pride and dedication. The Fire Department serves a population of nearly 55,000 and covers 15 square miles. The nation is slowly recovering from an economic downturn second only to the great depression. As a result, plans for Stations 3 and 4 were delayed. We were, however able to avoid any layoffs and provided a consistent level of staffing to our community. The Hanford Fire Department thanks our City Manager and City Council for their service to our community and their support of their Fire Department. I am very proud of the men and women who serve our community with the highest standard of professionalism and care.

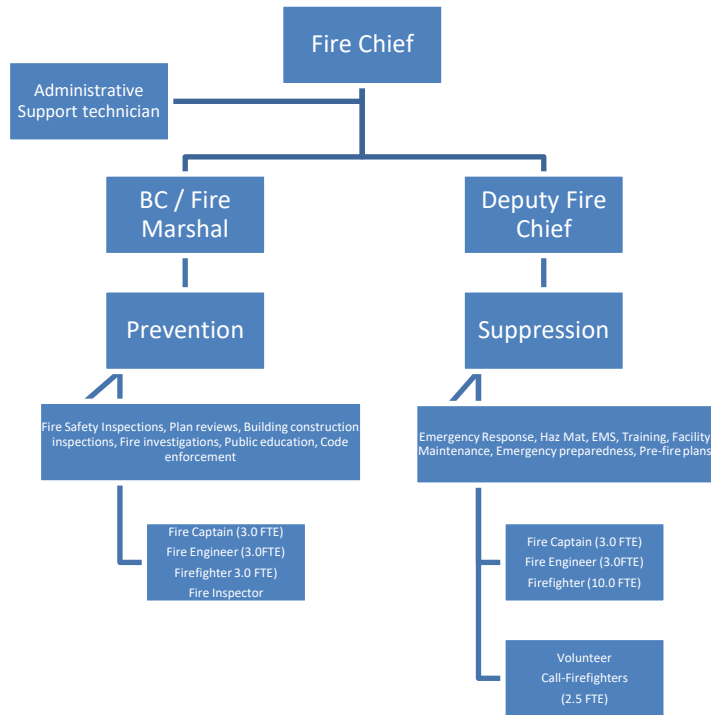
--Tim Ieronimo, Fire Chief

Budget



FIRE SUPPRESSION BUDGET PER CAPITA				
Year	Budget	Population	Budget/capita	
2008	\$3,661,820	51,599	\$70.97	
2009	\$3,530,070	52,570	\$67.15	
2010	\$3,532,630	53,266	\$66.32	
2011	\$3,556,490	54,950	\$64.72	
2012	\$3,731,840	55,123	\$67.70	

Organizational Chart



Incident Statistics

<i>Incident Type</i>	<i>Responses</i>	<i>Percent of total</i>
Fire	159	3.35%
Explosion	7	.15%
EMS – Medical	3202	67.42%
Hazardous Condition	96	2.02%
Service Call	209	4.4%
Good Intent	920	19.37%
False Alarm	153	3.22%
Other Incident Types	3	.06%

Total incidents in 2012
4749

Apparatus Responses

<i>Apparatus</i>	<i>Emergency</i>	<i>Non-priority</i>	<i>Apparatus</i>	<i>Emergency</i>	<i>Non-priority</i>
<i>Chief 1</i>	52	1	<i>Engine 1</i>	2544	109
<i>Chief 2</i>	14	3	<i>Engine 2</i>	1283	56
<i>Chief 3</i>	26	4	<i>Patrol 1</i>	973	4
<i>Utility 1</i>	3	0	<i>Patrol 2</i>	8	0
<i>Haz-mat 1</i>	0	0	<i>E202</i>	4	0
<i>Command 1</i>	0	0	<i>Engine 201</i>	23	0

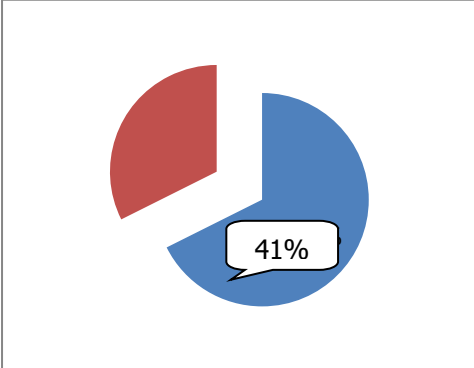
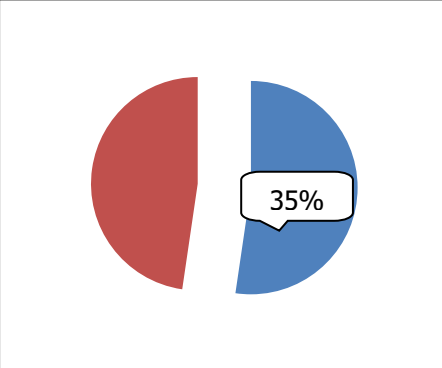
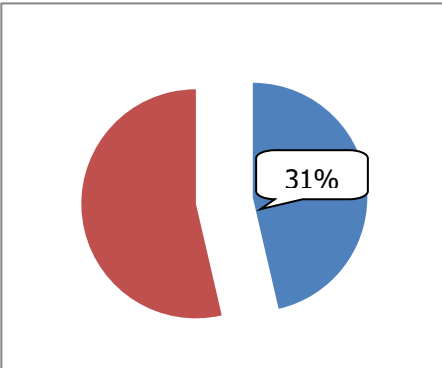
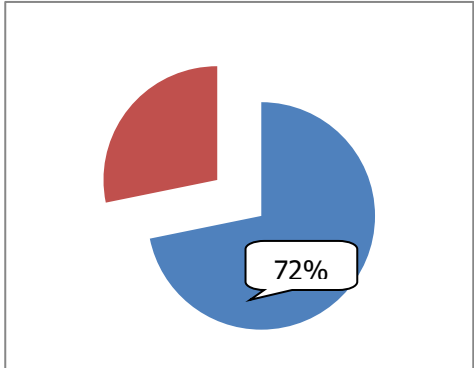
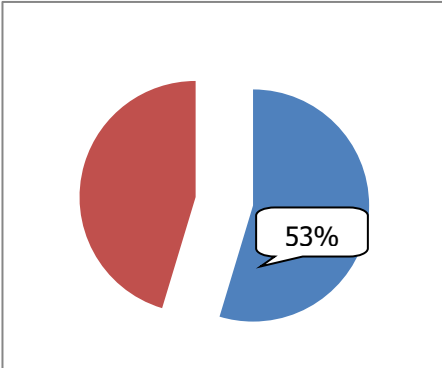
Response Time

Historically, the goal of the Hanford Fire Department is to maintain the five minute emergency response time to **90%**. In fiscal year 09/10 the departments goal changed slightly to obtain a (4) minute emergency response drive time to reach **90%** of total calls for service by the first arriving unit. See "Fractile Response" information.

Response Time	Code 3 (Emergency) calls
Less than 1 minute	7
1-2 minutes	22
2-3 minutes	88
3-4 minutes	278
4-5 minutes	598
5-6 minutes	894
6-7 minutes	776
Over 7 minutes	1047

Within 5 minutes
27%
Of the time

Fractile Response Information

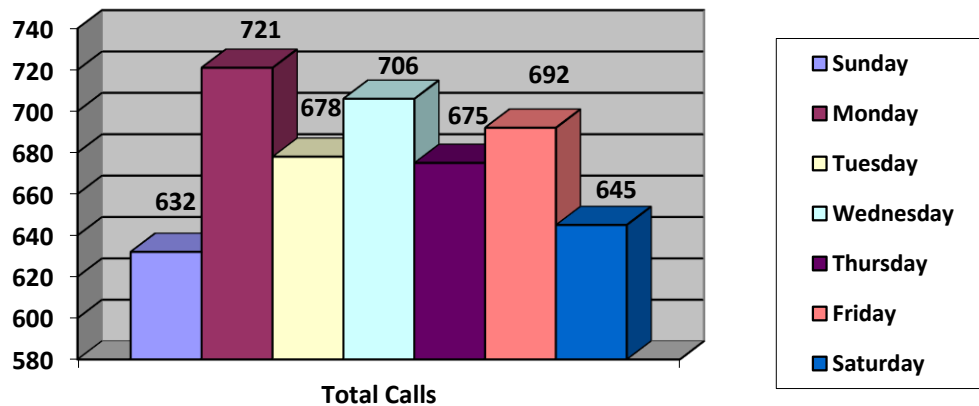
<p>Dispatch Reaction Time Goal is 90% within 1 minute</p>  <p>A pie chart with a red slice representing 41% and a blue slice representing 59%. A callout box points to the red slice with the text '41%'.</p>	<p>Turnout Time for EMS Goal is 90% within 1 minute</p>  <p>A pie chart with a red slice representing 35% and a blue slice representing 65%. A callout box points to the red slice with the text '35%'.</p>										
<p>Actual 90% Times</p> <table data-bbox="267 850 803 1008"> <tr> <td>Dispatch Reaction Time</td> <td>2:53</td> </tr> <tr> <td>Turnout Time (EMS)</td> <td>2:14</td> </tr> <tr> <td>Turnout Time (FIRE)</td> <td>3:00</td> </tr> <tr> <td>Response Time-Drive Time (EMS)</td> <td>5:09</td> </tr> <tr> <td>Response Time-Drive Time (FIRE)</td> <td>6:26</td> </tr> </table>	Dispatch Reaction Time	2:53	Turnout Time (EMS)	2:14	Turnout Time (FIRE)	3:00	Response Time-Drive Time (EMS)	5:09	Response Time-Drive Time (FIRE)	6:26	<p>Turnout Time for fires Goal is 90% within 1 minute</p>  <p>A pie chart with a red slice representing 31% and a blue slice representing 69%. A callout box points to the red slice with the text '31%'.</p>
Dispatch Reaction Time	2:53										
Turnout Time (EMS)	2:14										
Turnout Time (FIRE)	3:00										
Response Time-Drive Time (EMS)	5:09										
Response Time-Drive Time (FIRE)	6:26										
<p>Response Time (Drive Time) for EMS Goal is 90% within 4 minutes</p>  <p>A pie chart with a red slice representing 72% and a blue slice representing 28%. A callout box points to the red slice with the text '72%'.</p>	<p>Response Time (Drive Time) for fires Goal is 90% within 4 minutes</p>  <p>A pie chart with a red slice representing 53% and a blue slice representing 47%. A callout box points to the red slice with the text '53%'.</p>										

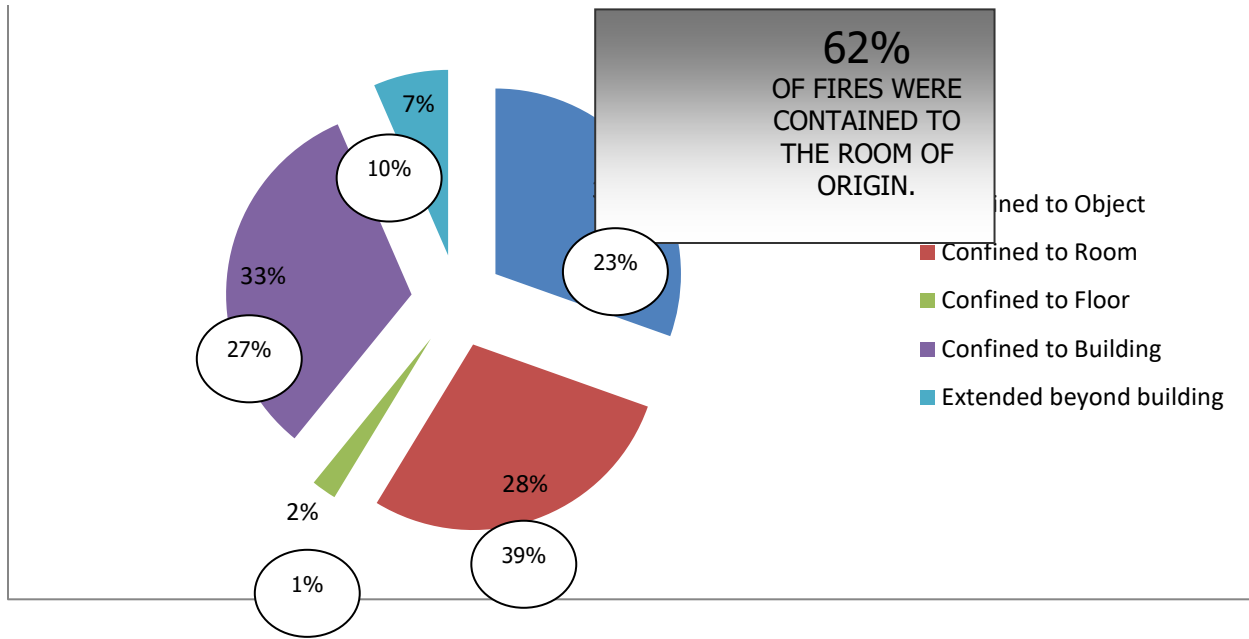
Incident Distribution

Incidents by time of day

Time of day	Number of Incidents
00:00-00:59	121
01:00-01:59	110
02:00-02:59	88
03:00-03:59	105
04:00-04:59	95
05:00-05:59	93
06:00-06:59	105
07:00-07:59	159
08:00-08:59	210
09:00-09:59	208
10:00-10:59	254
11:00-11:59	269
12:00-12:59	277
13:00-13:59	293
14:00-14:00	260
15:00-15:59	261
16:00-16:59	251
17:00-17:59	287
18:00-18:59	259
19:00-19:59	236
20:00-20:59	235
21:00-21:59	224
22:00-22:59	196
23:00-23:59	153

Incidents by day of the week





It is the goal of the Hanford Fire Department to confine **80%** of all property loss structure fires to the room of origin.

Month	2012 Fire Loss	2011	2012 Total Value	2011 Value	Total Savings
January	\$2300	\$40,648	\$471,025	\$577,847	\$468,725
February	\$26,646	\$26,400	\$507,548	\$379,911	\$480,902
March	\$35,094	\$70,329	\$973,784	\$560,272	\$938,690
April	\$67,960	\$12,000	\$388,017	\$152,638	\$320,057
May	\$113,222	\$243,025	\$597,497	\$1,297,064	\$484,275
June	\$244,927	\$15,700	\$2,427,201	\$15,700	\$2,182,174
July	\$2,239,721	\$46,800	\$2,633,163	\$326,249	\$393,342
August	\$101,506	\$6,500	\$1,116,622	\$1,353,342	\$1,015,116
September	\$10,717	\$25,710	\$174,819	\$383,825	\$164,102
October	\$3,600	\$10,268	\$4,841	\$1,436,324	\$1,241
November	\$2,150	\$20,256	\$317,980	\$25,573,971	\$315,830
December	\$200	\$10,675	\$350	\$154,213	\$150
TOTAL	\$2,847,773	\$528,131	\$9,612,847	\$32,057,443	\$6,675,074

Fire Station 1

Fire Station 1 is located at 350 W. Grangeville Boulevard. This station is the headquarters for the Hanford Fire Department. The Fire Chief, Deputy BC/Fire Marshal and Fire Inspector all offices at this station. This station has in service since 1989 and responds to 76% of all the calls received by the department. Daily staffing is either 4 or 5 firefighters staffing (2) apparatus. This station is also home to the Hazardous Materials Response unit



Chief, have been nearly

Fire Station 2

Fire Station 2 is located at 10553 Houston Avenue. This station is responsible for protecting the southern portions of Hanford including the industrial park. Station 2 is staffed with 3 firefighters on 1 or 2 units respectively. Station two also serves as a training facility for vertical ventilation and forcible entry. The Mobile Command unit housed here for use by both the fire and departments. These units respond to just than 24% of all calls.



or 4

is police better

Future Fire Station's

In 2008, The Hanford Fire Department commissioned a study to determine the best locations of new fire stations in order to reduce response times and keep up with growth.

Fire Station 3 – North of Grangeville at Centennial

Fire Station 4 –South of Hanford Armona road at 12th Avenue

Training

The Hanford Fire Department is an all hazard response organization. Fighting fire is one of several disciplines that are required of the firefighters in Hanford. Our companies respond to emergency medical aids, traffic collisions, gas leaks, confined space rescues, hazardous materials spills as well as many other types of emergencies. Each of these requires a separate set of skills and abilities. Each year the Hanford firefighter spends hundreds of hours training in a continuing commitment to be at the ready. In 2012, members of the Hanford fire department completed **4,619** hours of training

Baker	160.5	Kaufman	222
Bracy	122	Lee	122
Briones	171.5	Martinez	130.5
Brotmarkle	187	McKean	127.5
Buller	189.5	Mellon	171.4
Cogburn	193	Rossmann	213.3
Costa	216.5	Rowe	203.10
Ekk	167.5	Silsby	187.2
Etulain	128	Springer	170.5
Fredrickson	154.5	Sumaya	170.5
Glynn	175.5	Sunia	227.6
Henry	217.2	Turner	157
		Weisser	86

Training (Volunteers)

Hanford volunteers meet twice each month on a Wednesday for lecture and on a Saturday for manipulative training. Hanford volunteers respond to fires of all types.

Bradley	31	Kong	33
Brady	34.5	Kurtz	29.5
Brieno	3.5	Puerner	57.8
Dodd	1	Ronk	11.5
Farr	24.5	Sumaya	13
Gray	5	Torres	36
Kennedy	28	Wilhite	7.5
Kile	11	Young	8

Fire Suppression Activities

The Hanford Fire department also participates in activities outside of the emergency response. The Hanford fire department is committed to providing the public the services that it needs to aid in fire safety and education.

Activity	Hours	Activity	Hours	Activity	Hours
Physical Fitness	2311	Smoke Detectors	14	Reports / Paperwork	472
Run book / Maps	4	SCBA Maintenance	39	Vehicle Maintenance	2636
Company Inspections	87	Company re-Inspections	17	Equipment Maintenance	2729
Fire Hose Maintenance	253	Fire Investigations	75	Fire Station Maintenance	1118
Fuel Apparatus	194	Grounds Maintenance	845	Hydrant Maintenance	559
Errands and mail delivery	1041	Meetings	350	Miscellaneous	288
Office Work	189	Officer Time	401	Public Relations Visits	247
Thursday Night Market	47	General Fire Safety Class	8	CPR Classes	0
Extinguisher Class	9	Fire Prevention Week class	57	Fire Station Tours	182

Fire Prevention Activities

It is the goal of the Fire Prevention division to provide efficient and cost effective fire prevention programs for the citizens of Hanford, enforce the latest edition of the Uniform Fire Code as well as California State and local ordinances.

Activity	#	Activity	#	Activity	#
Building Inspections	38	Complaint Inspections	14	Residential Safety Inspection	0
Building Re-Inspections	6	Citations Issued	1	Hood system inspection	5
Certificate of Occupancy Inspection	177	Hydrant Fire Flow	2	Knox box installation	13
Certificate of Occupancy Re-Inspection	111	Underground 200psi test	9	Weed abatement notice	0
Project Review (Meeting)	0	Above ground 200psi test	75	Weed abatement inspection	61
Project Review (Plans)	168	Sprinkler acceptance test	104	Juvenile Fire setter program	0
Site Plan Review	16	Permits for above ground storage tank	0	Construction inspection	124
Project Consultation	22	Fire Alarm test	11	Fireworks booth inspection	30
State Licensing Inspection	17	Public Service Announcement	26	Fire Investigations	54